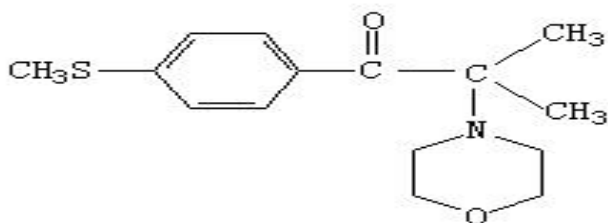


JRCure 907

Description

JRCure 907 is an effective photoinitiator. It can be mixed with JRCure 184 or JRCure ITX for gloss finish for paper, metal and plastic. It also can be applied in UV offset ink and electronic photo-resist and PCB material. Recommended dosage is 2-6% w/w.

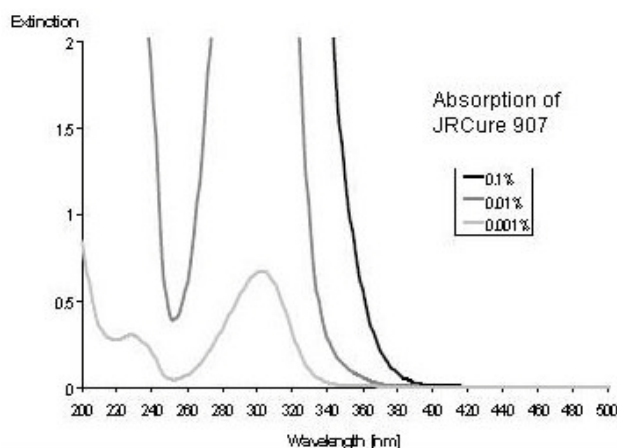


$C_{15}H_{21}NO_2S$ CAS No.: 71868-10-5

2-Methyl-4'-(methylthio)-2-morpholinopropiophenone

Physical Properties

Appearance.....	White crystal powder
Molecular weight.....	279
Melting point, °C.....	73-76°C
Purity,%.....	≥99
Volatiles.....	≤0.25%
Ash.....	≤0.1%
Transmittance (10g/100 ml Toluene):	
425nm.....	≥85%
500nm.....	≥95%



Packaging

20KG/CARTON
30CARTON/PALLET